

## Code sheet for Metal **Points** Database, Ban Chiang Project

All measurements are in centimeters unless otherwise noted

**Serial\_number** = unique numerical designator for each artifact

**Artifact\_ID**: excavation abbreviation followed by the small find number/bag number.

For example, BC 0603/0471 = Ban Chiang 1974 excavation; small find number=603; bag number = 471

**Site** = site where material was recovered

BAN CHIANG BC = 1974 excavation at Ban Chiang by Penn/Thai Fine Arts Department. Excavation abbreviation = BC.

BAN CHIANG BCES = 1975 excavation at Ban Chiang by Penn/Thai Fine Arts Department. Excavation abbreviation = BCES.

BAN PHAK TOP = 1975 excavation by Penn (William Schauffler). Excavation abbreviation = BPT.

BAN TONG = 1975 excavation by Penn (William Schauffler). Excavation abbreviation = BT.

DON KLANG = 1975 excavation by Penn (William Schauffler). Excavation abbreviation = DK.

**Small\_find\_number** = small find number assigned in the field or lab

**Bag\_number** = artifact bag number assigned in the field

**Artifact\_class** = small find class

POINTS: small points, spear points, and other small and long straight points that have a tapered end coming to a point extending from and in alignment with the hafting element. The shape implies that they were used to pierce an object. The cross section of the point can be flattened or round. The hafting elements on complete examples are either sockets or tangs.

**Material** = the material of which the artifact is made

Cu-base = copper-base metal

Fe = iron

Bimetallic = copper-base metal and iron

### Provenience

**Period** = regional period

LP-Protohistoric

LP = Late Period

MP-LP = Middle to Late Period

MP = Middle Period

EP-MP = Early to Middle Period

EP = Early Period

**Subperiod** = the division of the Early Period  
 upper  
 lower

**Burial\_phase** = varies by site

Ban Chiang BC and Ban Chiang BCES

- X
- IX
- VIII
- VIIIb
- VIIa
- VI
- Vc
- Vb
- Va
- IVc
- IVb
- IVa
- IIIb
- IIIa
- Ic
- Ib
- Ia
- I

Ban Tong

- 2
- 1

Don Klang

- 4
- 3

**Context** = the kind of deposit from which the artifact was recovered during the excavation.  
 White defines four general categories of context for artifacts in the four sites: (1) deliberately placed in burials; artifacts are called grave goods; (2) near skeletons or in grave fill, but not necessarily grave goods; artifacts are called burial-associated materials; (3) in features of various sorts; and (4) in the general soil matrix.

- grave good
- burial-associated
- feature
- feature pdb = possible disturbed burial
- general soil matrix

**Level** = cultural level by excavation locale

BC	BCES	BPT	BT	DK
13	04D	12	09	05
12	04C	11	08B	04B

11	04B	10	08A	04A
10	04A	09	07B	03C
09	03I	08B	07A	03B
08	03H	08A	06	03A
07	03G	07	05	02/03
06	03F	06	04	02C
05	03E	05	03	02B
04	03D	04	03/02	02A
03	03C	03	02B	02/01
02	03B	02	02A	01C
01	03A	01	01	01B
	02H			01A
	02G			
	02F			
	02E			
	02D			
	02C			
	02B			
	02A			
	01A			

**Square** = excavation square

**Quadrant** = quadrant of excavation square (Sections are also noted in this field.)

Ban Chiang BC and BCES

None  
 ALL QUADS  
 NEQ  
 NEQ SEQ  
 NEQ NWQ  
 NWQ  
 NWQ NEQ  
 NWQ SWQ  
 SEQ  
 SEQ SWQ  
 SWQ

Ban Phak Top

None  
 SWQ  
 SEQ  
 NWQ  
 NEQ  
 North section

Ban Tong

None

SWQ  
SEQ  
NWQ  
NEQ SEQ  
NEQ

Don Klang  
WQ  
SQ WQ  
NQ SQ EQ  
NQ EQ  
NQ  
EQ

**Layer** = excavation layer

**Burial\_number** = site/locale followed by assigned burial number

**Burial\_association** = vertical relationship of grave good to skeleton

Unclear  
Beside skeleton  
Beneath skeleton  
Above skeleton  
Worn by deceased  
Found mixed with bones

**Location** = horizontal relationship of grave good to skeleton

Left  
Right  
Center  
Beyond head  
Beyond feet

**Body\_part** = the part of the body upon which or near which the artifact was found

**Feature\_number** = feature number, assigned in the field

**Feature\_type** = feature type/description

cache  
cache of mixed objects  
cache—pot

clump  
clump of shell  
mixed artifact clump

clusters  
cluster of animal bone  
cluster of miscellaneous human bone  
mixed artifact cluster (with crucible)

sherd cluster

discrete finds

discrete human bone  
discrete small find  
laterite lump  
stone

disturbance

disturbance—mixed  
insect disturbance

ditch

hearth

pits

large pit  
medium pit  
small pit

possible disturbed burial

post hole

scatters

scatter of mixed objects  
scatter of sherds and bone

soil

sediment feature  
soil feature

### **Artifact Status**

**Completeness** = how much of the artifact is present

unknown  
intact  
whole, reconstructed  
greater than half  
less than half  
fragmentary  
unclear

**Corrosion\_level** = degree of corrosion; assessment was initially made in the late 1970s and was partially updated in 2001. Left blank if no information was available.

not applicable  
cannot tell

no metal present = appears to be completely corroded  
may be metal present = corroded but there is reason to believe that some metal may be present  
metal present

**Conserved** = whether the artifact in 1978 was assessed and conserved by Tamsen Fuller, a Museum conservator

yes  
no

**Lab\_number** = lab number assigned by conservator

**Sampled** = whether the artifact was sampled or examined metallographically

blank = not sampled  
sampled = sample was cut but not examined, usually because sample was completely corroded.  
metallography = cut, mounted, and examined metallographically. Elemental and microhardness tests may also have been performed.

**Elemental** = whether an elemental analysis was performed on the artifact.

yes  
blank = no

**Hardness** = the Vickers microhardness results for five tests. Only the range of results for each artifact is presented here. More details are in the separate Hardness Ranges database. If no hardness test was performed then the space is blank.

### **Artifact Description**

**Type** = The class is subdivided into four types based on size and overall morphology (see attached figure). No specific function is assumed for any type.

small point  
spear point  
spike  
unclassified (other).

**Subtype** = Some types have subtypes based on hafting element:

socketed  
tanged  
blank = unknown

**Number\_of\_pieces** = the number of pieces that comprised the artifact in the 1970s, at first recording.

**Weight\_gm** = total weight of piece or pieces in grams. Measurement was made in the late 1970s before analysis.

**Maximum\_dimension** = maximum dimension of object in centimeters. If there is more than one piece then the largest piece is measured.

**Intact\_length** = length of intact objects only.

**Blade\_intact\_length** = length of intact blades only.

**Intact\_maximum\_width** = maximum width of intact blade. Not recorded for corroded iron blades.

**Maximum\_blade\_width** = maximum width of blade, recorded in the 1970s.

**Blade\_thickness** = maximum thickness of blade (except midrib), recorded in the 1970s.

**Rib** = midrib  
unclear  
present  
never present

**Blade\_shape** = shape of blade (see attached blade shape figure)  
0 = missing (cannot determine)  
1  
2  
3  
4  
5  
6

**Outer\_socket\_diameter** = outside diameter of socket, recorded in the 1970s. Not recorded for corroded iron sockets.

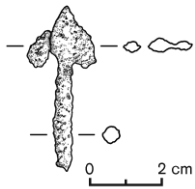
**Inner\_socket\_diameter** = inside diameter of socket, recorded in the 1970s. Not recorded for corroded iron sockets.

**Tang**  
unknown (cannot determine)  
intact  
damaged or partly broken  
never present

**Comments**

## Point Types

Small point



Spear point with midrib


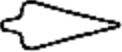
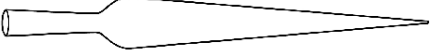

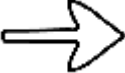



Spike



## Blade Shape

Shape of Point blade. All blades are flat in cross section except # 6.

1.  sharp-angled shoulders
2.  rounded shoulders
3. 
4. 
5. 
6.  spike with round cross section